

## Project overview

### Project background

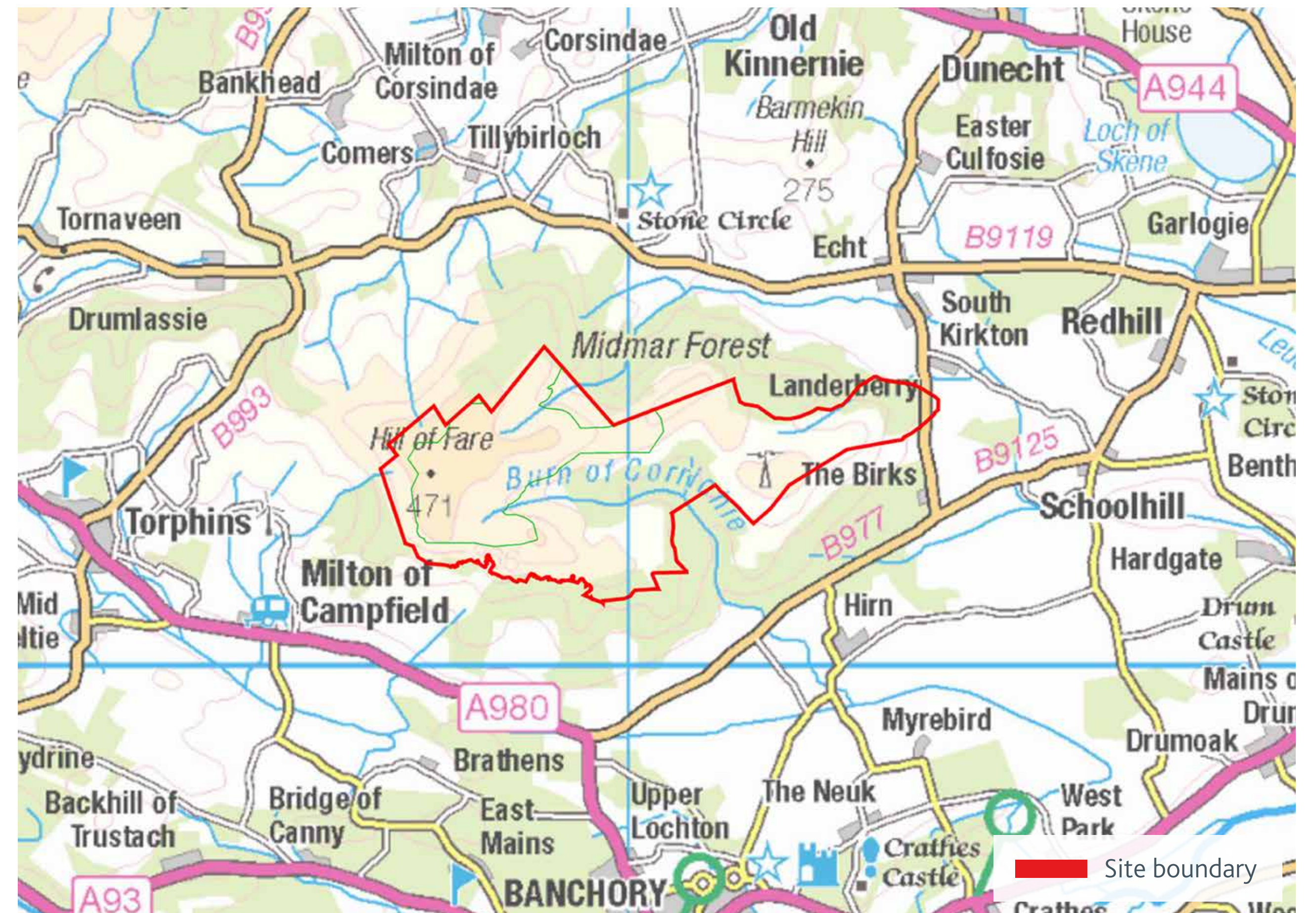
In August 2022 RES submitted a Scoping Report to the Scottish Government and other consultees seeking feedback on the scope of proposed environmental survey work for a wind farm and energy storage proposal at Hill of Fare. The site lies approximately 6km north of Banchory in Aberdeenshire.

The Scoping Report included an early design comprising 17 turbines at a tip height of around 250m and a proposed energy storage facility which would help maximise generation capacity and efficiency of the site.

In October 2022, we held public exhibitions in the local area to enable people to learn more about the project, discuss any questions with the RES project team, and provide feedback on this initial scoping design.

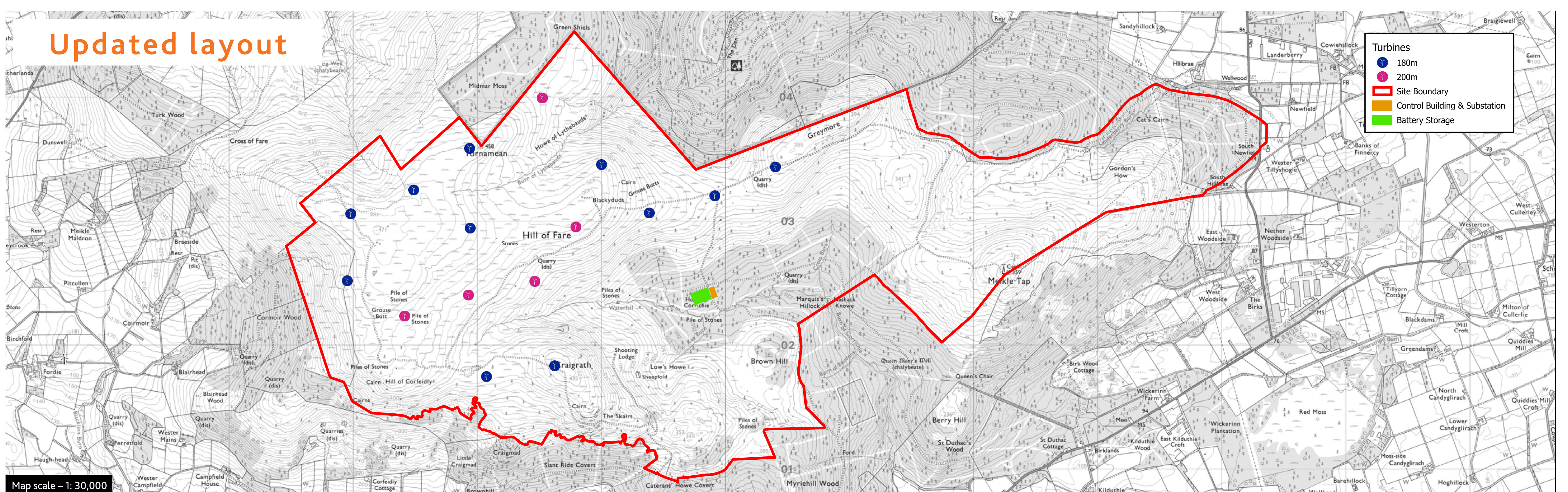
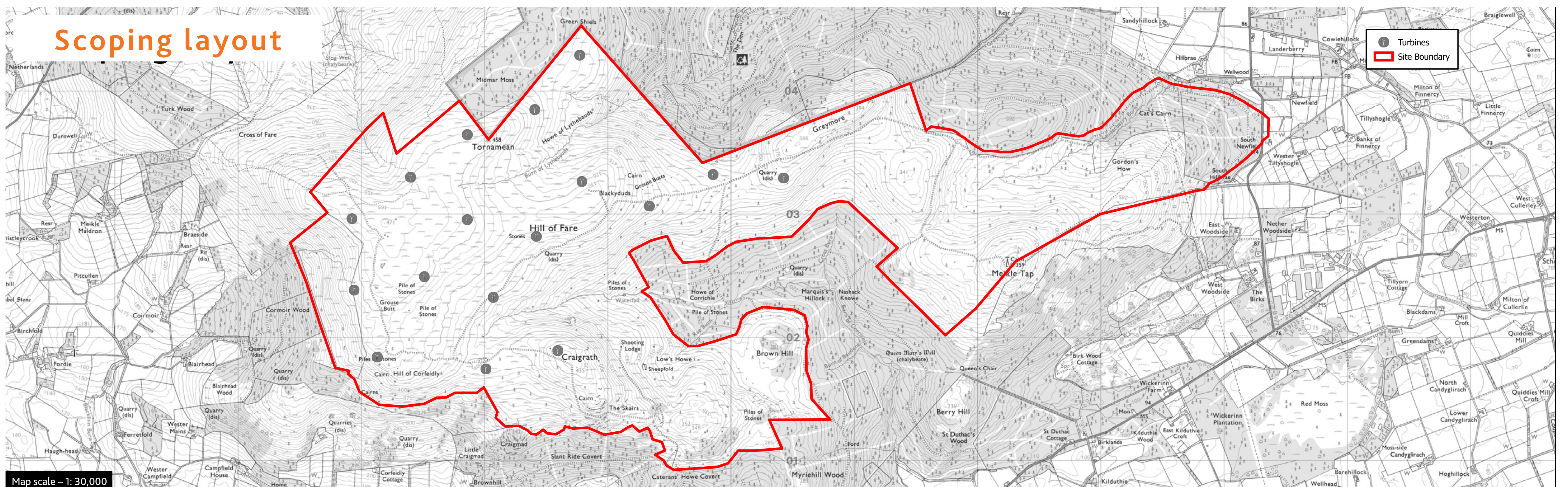
Since these events we have undertaken further detailed environmental and technical studies to build our understanding of the site. The findings from this work, together with the comments received from the public consultation as well as technical key consultee feedback, have been carefully considered in relation to the development of the design. The map at the bottom of this board shows an updated 16-turbine scheme with a mix of turbine heights.

### Site location map



### Design evolution – turbine layout and site boundary

The two maps below show the comparative changes in turbine numbers and locations, turbine height, and the red lined site boundary.



© CROWN COPYRIGHT, ALL RIGHTS RESERVED. 2023 LICENCE NUMBER 0100031673

Printed on FSC-certified paper by Compass Print Group Ltd  
Hareness Road, Altens Industrial Estate, Aberdeen, AB12 3LE

